



Phantom[®] Pressurised Insecticide

- Pests can't detect it
- Targeted, precise application
- Won't flush cockroaches
- Allows treatments to be scheduled in working hours
- Food and handling safe



Don't flush them out,
wipe them out.

Pests can't detect it. They can't avoid it.

Phantom Pressurised Insecticide is powered by state of the art non-repellant technology that makes it undetectable to pests. This means pests can't avoid it and continue to repeatedly cross through treated areas. There is also no trapping of insects inside commercial or domestic treated zones. As part of an effective Integrated Pest Management program, **Phantom** Pressurised Insecticide is the perfect partner with gel baits like **Goliath**® cockroach Gel.

The delayed-action mortality effect.

Slow paralysis.

Phantom Pressurised Insecticide attacks pests from inside their own bodies once ingested by preventing their cells from generating energy. This leads to paralysis, and ultimately, death. However, this process is not instantaneous, which means pests will freely enter the treatment zone.

No accumulation of dead cockroaches.

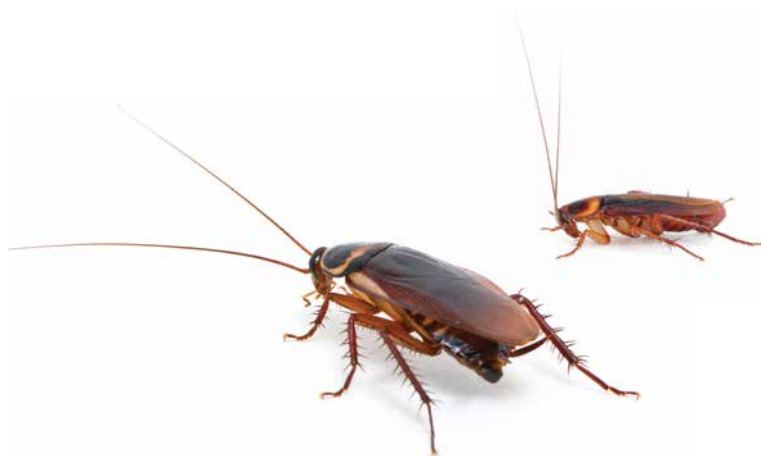
Phantom Pressurised Insecticide will not cause an accumulation of dead cockroaches or ants in a particular spot. (A pile of dead insects can alarm nestmates.)

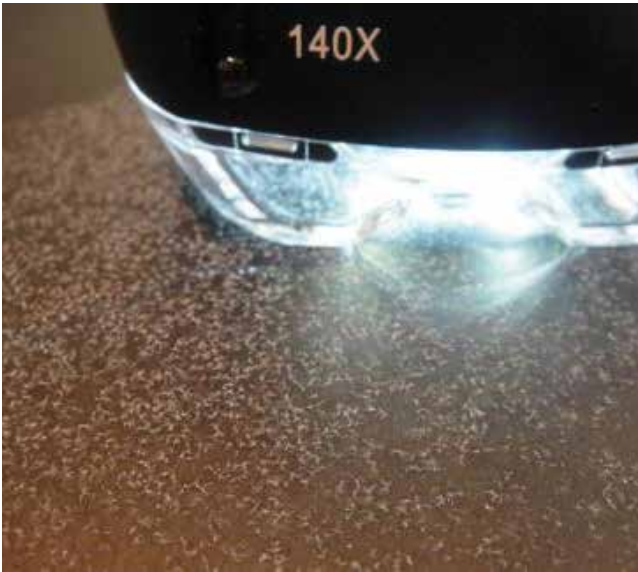
Pests appear normal.

Pests continue to behave normally and go about their regular routines for a short time before dying. There is nothing about their behavior or death to tip off others to the presence of **Phantom** Pressurised Insecticide.

Easy-to-use precise application.

- The ready-to-use formulation reduces overuse and eliminates the need for mixing and cleanup. Because it is precisely applied, **Phantom** Pressurised Insecticide helps reduce pesticide load making it a win-win for your customers and your business.
- New formulation dries in 'crystals' for enhanced bioavailability and faster performance on numerous substrates (porous, non-porous and high organic matter).
- Ready-to-use formulation reduces overuse and eliminates mixing.
- Broad spectrum control for commercial and domestic accounts, including cockroaches, ants, stored product pests and bed bugs.
- HACCP endorsed and approved for food-handling use.
- **System III** compatible.
- Will not disperse or 'lock in' pests.
- Pests are exposed to the active ingredient either by ingestion or contact.
- Remains highly effective in high organic matter substrates and is not subject to rapid breakdown with detergents and cleaning agents.
- Effective on pyrethroid-resistant strains of cockroaches and bed bugs.





Crystallisation technology delivers fast performance and no visible residues.

No visible residues on the surface

Phantom Pressurised Insecticide delivers its active ingredient by drying in crystals. No more white marks on surfaces or staining.

Faster performance

These 'crystals' ensure enhanced bioavailability and faster performance on numerous substrates: porous, non-porous and highly organic matter. The product remains on these surfaces, making it available for pests to pick it up and transfer it to their nestmates.

Resists rapid breakdown

In high organic matter substrates **Phantom** Pressurised Insecticide remains highly effective and compared to many conventional products, it resists rapid breakdown from high pH environments associated with detergents and cleansing agents.

See the difference. Your customers will too.

- No cockroaches running everywhere as pests don't get flushed out.
 - Less chance of contamination issues on food preparation surfaces.
 - No visible residue.
 - Schedule treatments during working hours - no more out of hours calls.
 - Perfect fit with cockroach gel baits like **Goliath** cockroach Gel.
 - No need to isolate treatments.
-

Undeniable results on egg capsules as well.

Phantom Pressurised Insecticide has been shown to be highly effective on German cockroach egg capsules as well as wiping out the adult.

Research trials showed that **Phantom** Pressurised Insecticide sprayed on tiles one day prior eliminated all cockroaches.

An additional benefit was seen with a significant number of the nymphs that do hatch were also eradicated, without direct contact to a treated surface.

For more information on the trial visit www.pestcontrol.basf.com.au



	German Cockroach	American Cockroach
Direct Spray KD50 (time taken to achieve 50% mortality)	90 minutes	55 minutes

Reference: University of Technology Sydney, 2011

Complete mortality of females by:	Nymph total:	Mean % nymphal mortality days post hatch			
		1 day	2 days	3 days	4 days
Chlorfenapyr	524	26.1	58.4	59.5	63.7
Mechanical	395	1.0	3.5	3.5	4.6

ALWAYS READ AND FOLLOW LABEL DIRECTIONS.

This brochure is intended as general advice. Disclaimer: The information submitted in this publication is based on current BASF knowledge and experience. In view of the many factors that may affect its application, this data does not relieve the user from carrying out their own tests. The data does not imply assurance of certain properties or of suitability for a specific purpose. It is the responsibility of the user to ensure that any proprietary rights and existing laws and legislation are observed.

BASF Australia Limited, Level 12, 28 Freshwater Place Southbank 3006 Victoria Australia.
©Copyright BASF 2014 @Registered trademark of BASF

Toll Free: 1800 006 393 www.pestcontrol.basf.com.au

 **BASF**
The Chemical Company